



*The Gaulley Farmhouse*



*The Gaulley Craftsman*

2,831 square feet

4 bedrooms • 2 1/2 baths  
(optional up to 4 1/2)

Study or optional guest suite on first floor

2 story foyer

Luxurious master suite

Large kitchen with breakfast nook



*The Gaulley Lodge*



SOUTHCLIFF™

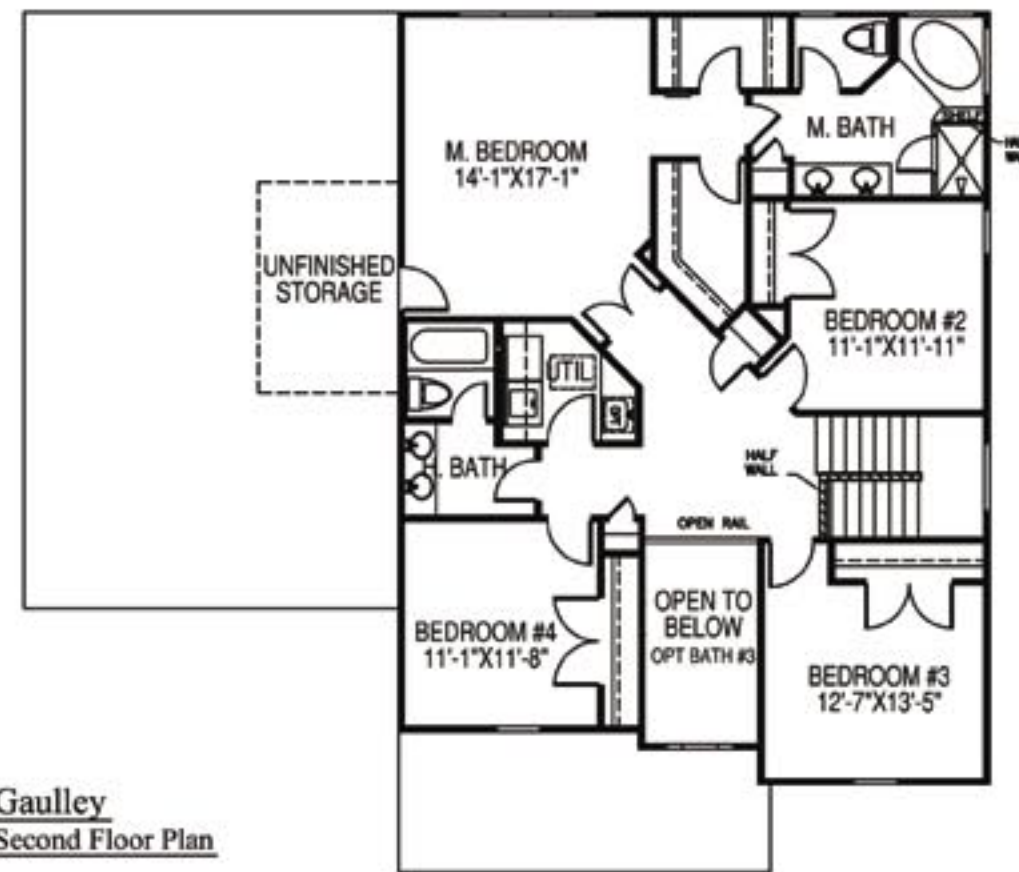
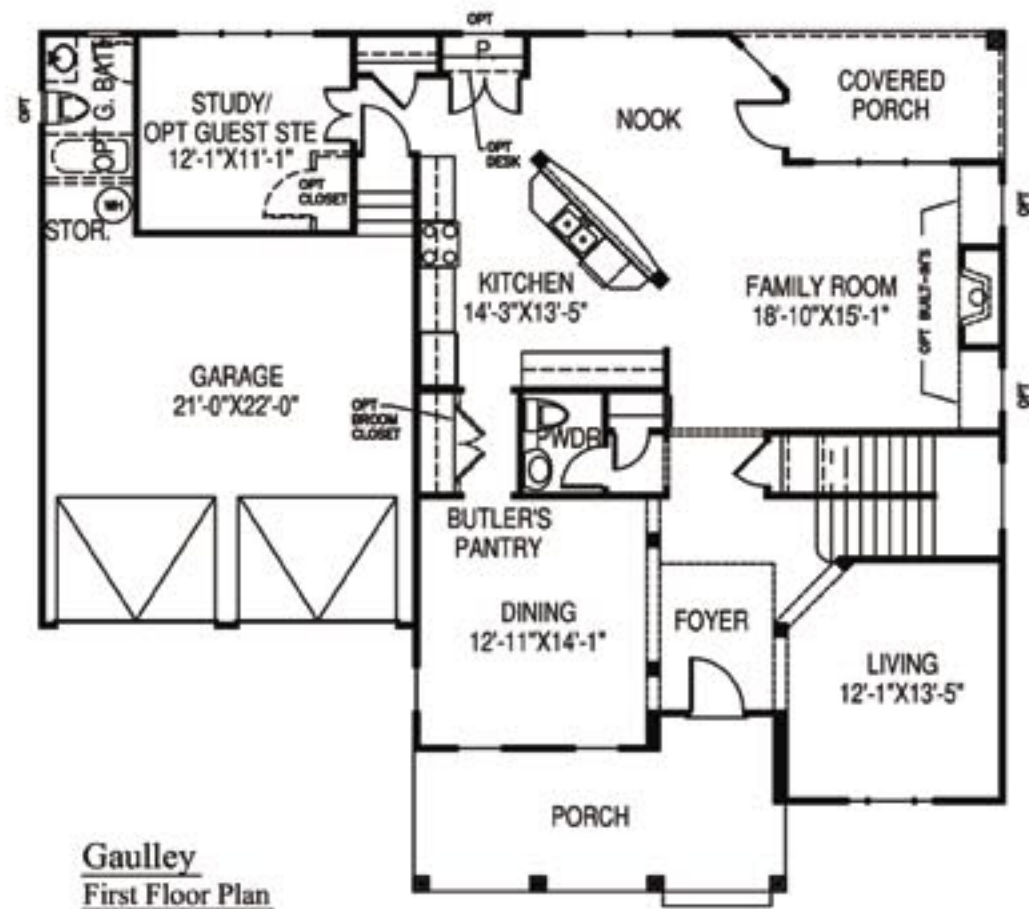
Nature at your doorstep.

10 Southcliff Parkway • Fairview, NC • 28730 • 866.844.0660 • southcliffasheville.com



BILTMORE FARMS™  
HOMES





**Gaulley**  
Optional Bath #3-  
Deletes open Foyer

All dimensions and specifications (including square footages) are approximate and artist's conceptions. Product availability, prices, floor plans, elevations, and specification levels are subject to change without notice or obligation.